

MODELS **810151, 810152, 810153, 810154, 810155, 810156, 810157, 810158**

Switch options are available for the following Models: 802, 803, 807, 810, 812, 816, 817, 827, 830, 840, 846, 847, 849, 850, 858, 860, 868, 870, 890 & 1000.

Reed Switches are now available from factory stock. The switches are activated by a magnetic ring installed on the cylinder piston. As the magnetic ring moves under the switch, it closes the contacts and sends a signal to a programmable controller or other electronic device.

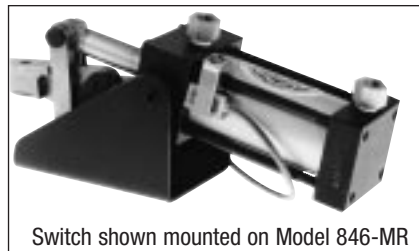
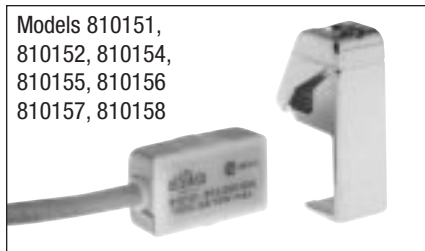
Note: To use these switches, a clamp model must have the “—MR” suffix (indicates magnetic ring). Switches and clamps are ordered separately.

Switches have 9' leads as standard. Longer leads are available on special order.

Hall Effect switches are also available on special order. Contact our Customer Service Department.

Switches have a tie-rod mounting clamp as standard. A band clamp is required for 812-MR and 816-MR cylinders, used with Switch Model 810152.

WARRANTY ON ELECTRICAL PRODUCTS
 DE-STA-CO EXPRESSLY LIMITS THE PRODUCT WARRANTY AS APPLIED TO ANY ELECTRICAL OR ELECTRONIC COMPONENT USED ON OR ASSOCIATED OR CONNECTED WITH ANY PRODUCT TO A PERIOD OF ONE (1) YEAR FROM THE DATE THE PRODUCT IS DELIVERED TO THE FIRST USER.

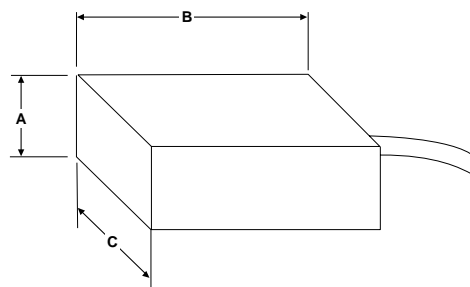


Model No.	EDP No.	Type	Function	Switching Voltage	Switching Current	Switching Power	Maximum Voltage Drop	Temperature Limit (Ambient)	Lead Wire	Sensitivity and Orientation
810151	58105	REED, MOV, LED	SPST Normally Open	5-120V AC/DC 50/60 HZ	.5A MAX. .005A MIN.	10 Watts MAX.	3.5 Volts	176° F (80° C)	9'	85 Gauss Parallel
810152	58152	REED, MOV, LED	SPST Normally Open	5-120V AC/DC 50/60 HZ	.5A MAX. .005A MIN.	10 Watts MAX.	3.5 Volts	176° F (80° C)	12'	85 Gauss Parallel
810153	58104	REED, MOV, LED	Normally Open	24-240V AC 50/60 HZ	4A MAX. .005A MIN. 50A in Rush	100 Watts MAX.	1 Volt	176° F (80° C)	9'	85 Gauss Parallel
810154	58154	REED, No MOV, No LED	SPST Normally Open	0-120V AC/DC 50/60 HZ	.5A MAX.	10 Watts MAX.	0 Volts	176° F (80° C)	9'	85 Gauss Parallel
810155	58155	Hall Effect, LED Sourcing	Normally Open PNP Output	6-24V DC	.5A MAX.	12 Watts MAX.	.5 Volts	176° F (80° C)	9'	85 Gauss Parallel
810156	58156	REED, MOV, LED	SPST Normally Open	5-120V AC/DC 50/60 HZ	.5A MAX. .005A MIN.	10 Watts MAX.	3.5 Volts	176° F (80° C)	9'	85 Gauss Parallel
810157	58157	Hall Effect	Normally Open NPN Output	6-24V DC	.5A MAX.	12 Watts MAX.	.5 Volts	176° F (80° C)	9'	85 Gauss Parallel
810158	58158	Hall Effect	Normally Open PNP Output	6-24V DC	.5A MAX.	12 Watts MAX.	.5 Volts	176° F (80° C)	9'	85 Gauss Parallel

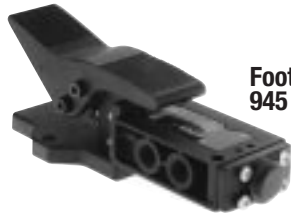
NOTE: Models 810156 and 810158 use a band to mount the switch to the wall of the cylinder. All other Models use the tie-rod clip.

Switch Dimensions (Less Mounting Clamp)

Model No.	EDP No.	A	B	C
810151	58105	.37	.93	.53
810152	58152	.37	.93	.53
810153	58104	.87	1.30	.67
810154	58154	.37	.93	.53
810155	58155	.37	.93	.53
810156	58156	.37	.93	.53
810157	58157	.37	.93	.53
810158	58158	.37	.93	.53



**Valves
930, 940**



**Foot Valve
945**

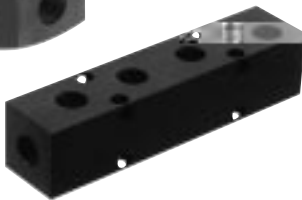
**Rapid Exhaust Valve
70914**



**Manifold
70901**



**Manifold
70903**



**Filter-Regulator-
Lubricator (FRL)
70905**

**Breather Vent
701062**



**Hose Kit
812816**



Valves

Part No.	EDP No.	Description
930	59300	4-way hand operated valve, pneumatic. Used on double-acting cylinders. Supplied with 1/8-27 NPT fittings. Operates on 35-125 psig, and can be used to control any of the air powered clamps.
940	59400	4-way hand operated valve, pneumatic. Same as the Model 930, except without the 1/8-27 NPT fittings. Ports are 1/4 NPT.

Foot Valve

Part No.	EDP No.	Description
945	59450	4-way foot operated valve, pneumatic. Same specifications as Model 940.

Rapid Exhaust Valve

Part No.	EDP No.	Description
70914	70914	Rapid exhaust valve, pneumatic. 3/8 NPT ports. Allows pneumatic back pressure to be exhausted out of the cylinder instead of traveling back to the valve. Result is faster operation.

Manifolds

Part No.	EDP No.	Description
70901	70901	Air or hydraulic seven-ported (1/4 NPT) manifold. Can be used as power or exhaust manifold in multiple clamp installations.
70903	70903	Air or hydraulic in-line six-ported (1/4 NPT) manifold. Can be used as power or exhaust manifold in multiple clamp installations.

Filter-Regulator-Lubricator (FRL)

Part No.	EDP No.	Description
70905	70905	Filter, Regulator, Lubricator. Attaches to shop air source. Allows direct control of air pressure into pneumatic clamping system. (3/8 NPT ports)

Breather Vent

Part No.	EDP No.	Description
701062	71062	Breather vent accessory for pneumatic valve. Threads into exhaust ports on valve. (1/4 NPT)

Hose Kits

Part No.	EDP No.	Description
812816	81281	One 8' hose with fittings and adaptors to connect one Model 812 or 816 clamp to Model 930 valve.



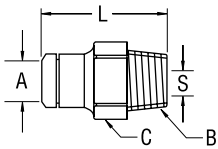
Polyurethane Pneumatic Tubing

Part No.	EDP No.	Size – Description
80960	80960	1/8 tubing – Sold per foot
80965	80965	1/8 tubing – 10 foot lengths
80970	80970	1/4 tubing – Sold per foot
80975	80975	1/4 tubing – 10 foot lengths
80980	80980	3/8 tubing – Sold per foot
80985	80985	3/8 tubing – 10 foot lengths

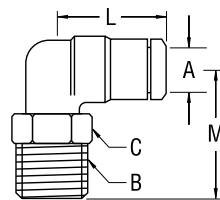
Pneumatic Push-In Fittings

Male Connector

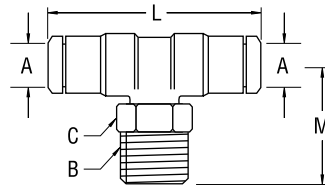
(MM O.D. Tube to NPTF [male] Thread)



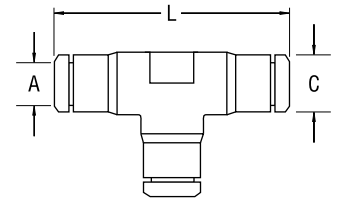
Swivel Male Elbow



Swivel Male Branch Tee



Union Tee



Part No.	EDP No.	Description	A	B	C	S	L	M
80900	80900	Male Connector	1/8	10-32 UNF	.315	.09	0.79	—
80902	80902	Male Connector	1/8	1/8	.44	.09	0.67	—
80904	80904	Male Connector	1/4	1/8	.44	.16	0.98	—
80906	80906	Male Connector	1/4	1/4	.56	.16	1.11	—
80908	80908	Male Connector	3/8	1/4	.69	.28	1.47	—
80910	80910	Male Connector	3/8	3/8	.69	.31	1.41	—
80912	80912	Swivel Male Elbow	1/8	10-32 UNF	.31	—	0.63	0.73
80914	80914	Swivel Male Elbow	1/4	1/8	.44	—	0.77	0.90
80916	80916	Swivel Male Elbow	1/4	1/4	.56	—	0.77	1.11
80918	80918	Swivel Male Elbow	3/8	1/4	.69	—	1.05	1.26
80920	80920	Swivel Male Elbow	3/8	3/8	.75	—	1.05	1.26
80922	80922	Swivel Male Branch Tee	1/4	1/8	.44	—	0.77	0.90
80924	80924	Swivel Male Branch Tee	1/4	1/4	.56	—	0.77	1.11
80926	80926	Swivel Male Branch Tee	3/8	1/4	.69	—	1.05	1.26
80928	80928	Swivel Male Branch Tee	3/8	3/8	.75	—	1.05	1.26
80930	80930	Union Tee	1/8	—	—	—	0.63	—
80932	80932	Union Tee	1/4	—	—	—	0.77	—
80934	80934	Union Tee	3/8	—	—	—	1.05	—